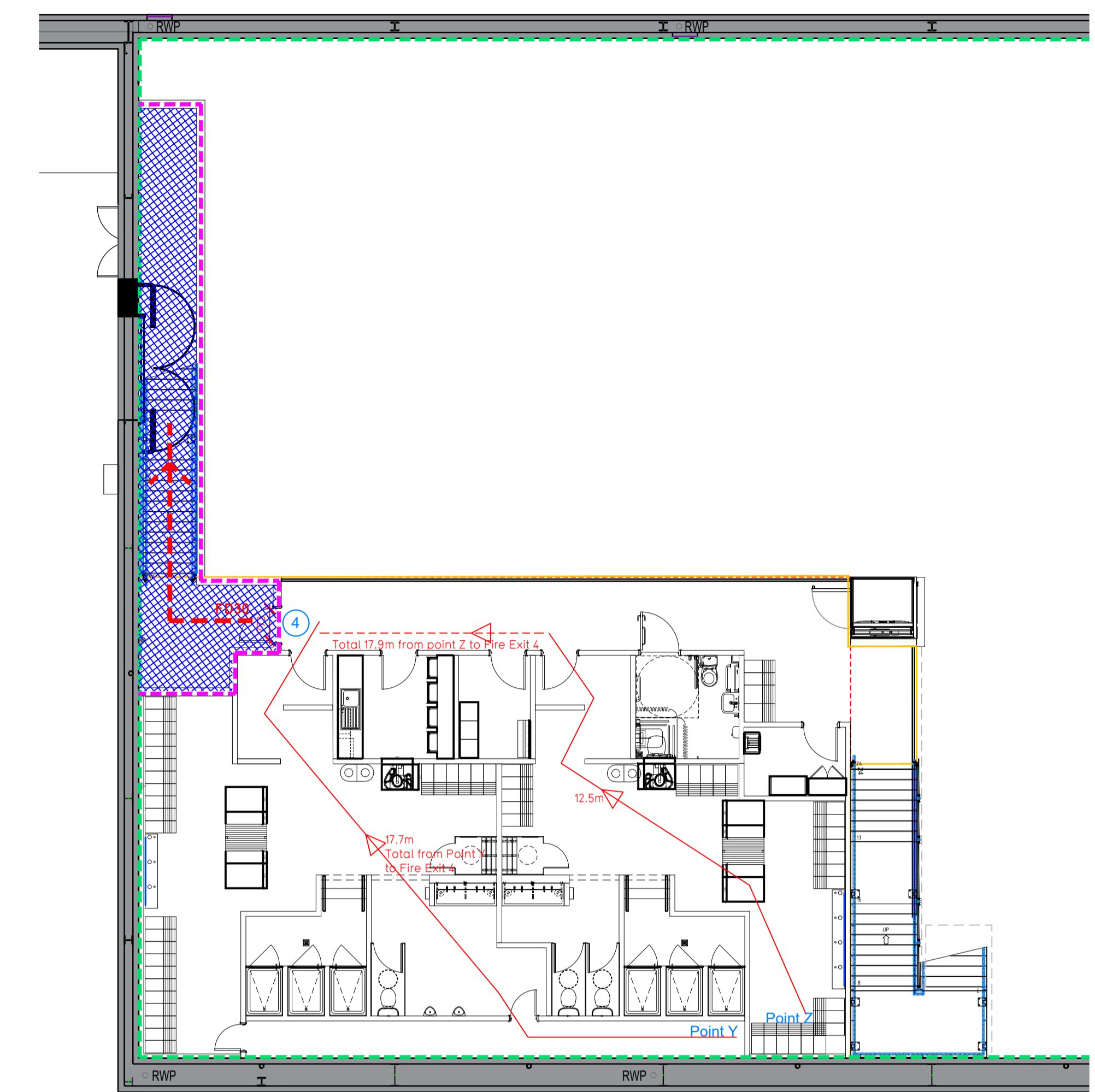
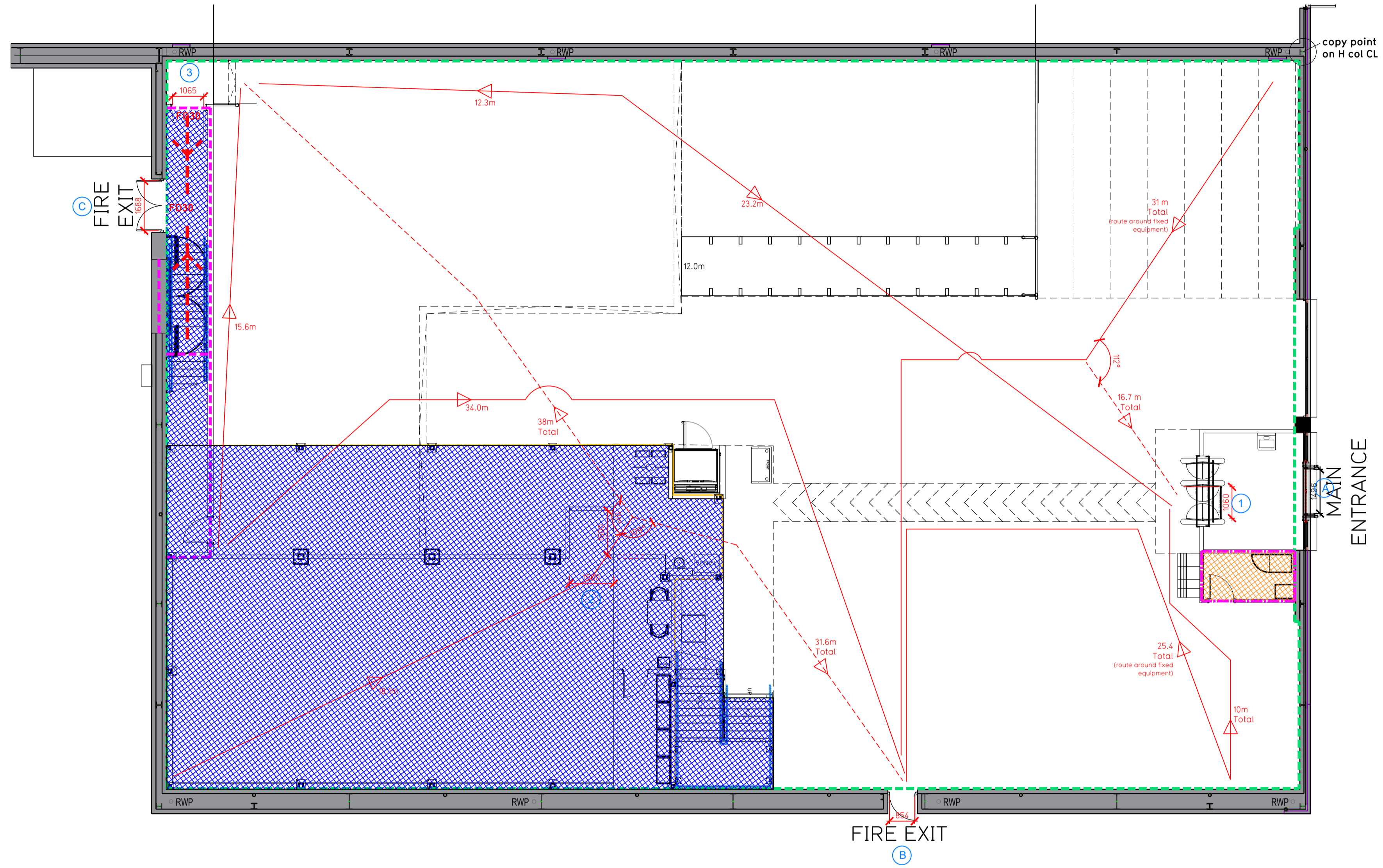


NOTE:

- Proposals must comply with all acoustic, fire & building regulation requirements
- No dimensions are to be scaled from this drawing. The contractor is responsible for checking all dimensions on site



Proposed Ground Floor Plan

Proposed Mezzanine Floor Plan

Fire Evacuation Key

	Existing wall to achieve min 30 minute fire rating (suitability of wall to be confirmed on site by Pure Gym Main Contractor)		Fire Escape Route
	Existing wall to achieve min 60 minute fire rating (suitability of wall to be confirmed on site by Pure Gym Main Contractor)		Minimum Clear Widths
	New wall to achieve min of 30min fire rating		Exit No.
	New wall to achieve min of 60min fire rating		Shared Escape Route
	Protected areas: walls, floors, ceilings and doors to achieve 30minute fire resistant construction.		
	Protected areas: walls, floors, ceilings and doors to achieve 60 minute fire resistant construction.		

Escape Route Widths:
 In line with Sections 3.21 & 3.22 of 'Approved Document Part B, Volume 2 - buildings other than dwellinghouses' - the adjacent calculations provide justification for the clear opening widths for escape from each floor level/ room in accordance with Table 4 & Appendix C.

Ground Floor
 Exit A Clear Opening Width = 1060mm (allows 222 persons to escape, limited by clear width of Exit No1)
 Exit B Clear Opening Width = 854mm (allows 110 persons to escape)
 Exit C Clear Opening Width = 1050mm (allows 222 persons to escape, largest opening to be discounted)

Exit A and Exit B provides a combined escape capacity of 332 persons, which is larger than the total estimated occupancy capacity of 194 Persons and is therefore thought to meet with the Approved Document Part B.

Mezzanine Floor
 Final Exit C F&D from Storey Exit 4, Clear Opening Width = 773mm (allows 60 persons to escape)
 Mezzanine Floor Total Estimated Occupancy Capacity = 58 Persons.

Exit provides a min. width of 773mm and would allow a max. no. of 60 persons to escape, which is larger than the total estimated occupancy capacity of 58 persons and therefore thought to meet the Approved Document Part B.

Unit Total Estimated Occupancy Capacity = 194 Persons

Staircase - check
 The existing escape stair has a width of 1100mm and is less than 2m from the final exit. The ground floor Storey Exit 4 is sized according to clause 2.23 at a maximum of 60 people. Final Exit C is therefore sized according to the standard formula for merging flows and has a min clear width in excess of 1.2m = ((60/2.5)+(60x1.2)/80)

Fire Alarm
 Fire Alarm designed and installed to BS 5839. Smoke & heat detection / emergency lighting by specialist. Please refer to M&E engineer's drawings / specifications.

Escape Lighting
 Emergency escape lighted designed and installed in accordance with BS 5266: Part 1. Please refer to M&E Engineer's drawings for final layout and specification.

Mezzanine Design CDP: New mezzanine structure including deck and column connections to be 60min FR using a boarded solution. Ceiling to be clear and flat ready to receive decoration. Service penetrations to be coordinated and suitably fire stopped. Contractor to submit proposals for design to be reviewed by building control and fire service. Escape Signage and emergency lighting is CDP under the M&E specification. Details of contractors proposals to be provided to Building Control Approved Inspector and Fire Officer within the Contractors Proposals Package, Clause 14.

Rev	Date	Description	Drawn/Checked

PROJECT TITLE
 Portishead Unit 2, Wyndham RP, Portishead, BS20 7BY

DRAWING TITLE
 Fire Evacuation Plan Ground and Mezzanine Floor Plans

DATE	SCALE	NO.	REV
28.04.22	1:100 @ A1	2079	

DRAWING PURPOSE
 CONSTRUCTION

Rev
 C00

PUREGYM

Pure Gym Ltd
 Town Centre House
 The Meriton Centre
 Leeds
 LS2 8LY

e: architecture@puregym.com
 t: 0113 285 8787
 w: www.puregym.com