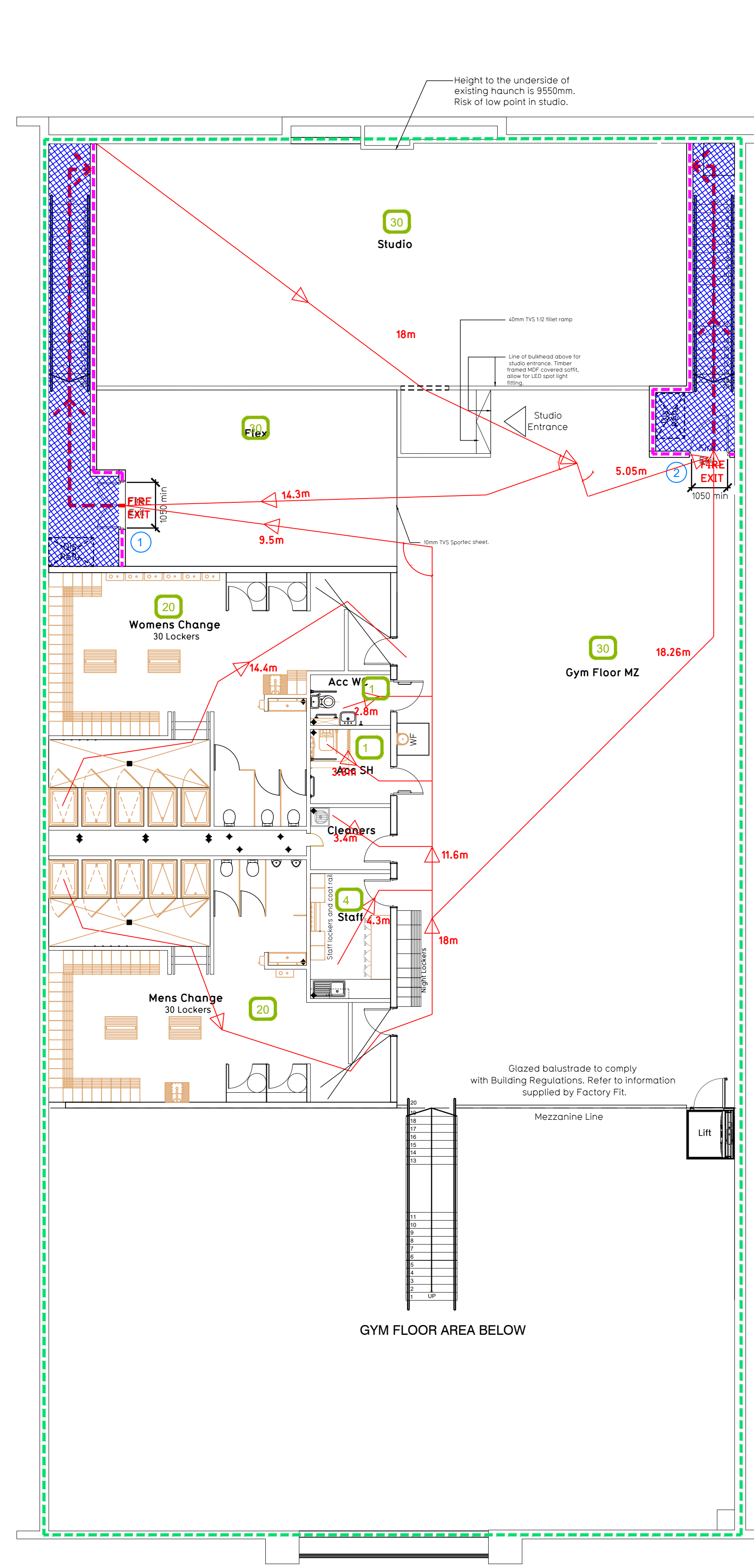


Proposed Ground Floor (Scale 1:100xp)



Proposed Mezzanine Floor (Scale 1:100xp)

Fire Evacuation Key

- Existing wall to achieve min 60 minute fire rating (suitability of wall to be confirmed on site by Pure Gym Main Contractor)
- New wall to achieve min of 60min fire rating
- Protected areas: walls, floors, ceilings and doors to achieve 30minute fire resistant construction.
- Protected areas: walls, floors, ceilings and doors to achieve 60 minute fire resistant construction.
- Occupancy level within area
- Fire Escape Route
- Minimum Clear Widths
- Exit No.
- - - Shared Escape Route

Escape Route Widths:
 In line with Sections 3.21 & 3.22 of Approved Document Part B, Volume 2 – buildings other than dwellings – the adjacent calculations provide justification for the clear opening widths for escape from each floor level/ room in accordance with Table 4 & Appendix C.

Ground Floor
 Exit 1 Clear Opening Width = 1050mm (allows 220 persons to escape)
 Exit 2 Clear Opening Width = 1050mm (allows 220 persons to escape)
 Exit 3 Clear Opening Width = 1050mm (allows 220 persons to escape)

Total Aggregate Width for Floor = 1050mm
 Ground Floor Total Estimated Occupancy Capacity = 220 Persons

Exits provides a min. width of 1050mm and would allow a max. No. of 220 persons to escape, to meet with the Approved Document Part B.

Mezzanine Floor
 Exit 1 Clear Opening Width = 1050mm (allows 220 persons to escape)
 Exit 2 Clear Opening Width = 1050mm (allows 220 persons to escape)

Total Aggregate Width for Floor = 1050mm
 Mezzanine Floor Total Estimated Occupancy Capacity = 220 Persons

Sprinklers
 System design and installed in compliance with BS EN 12845:2015 & LPC Technical Bulletin

Fire Alarm
 Fire Alarm designed and installed to BS 5839. Smoke & heat detection / emergency lighting by specialist. Please refer to M&E engineer's drawings / specifications.

Escape Lighting
 Emergency escape lighting designed and installed in accordance with BS 5266: Part 1. Please refer to M&E Engineer's drawings for final layout and specification.

Smoke Extract
 Smoke Extract System to be designed and installed in accordance with BS 7346: Part 8. Please refer to M&E Engineer's drawings for final layout and specification.

B	06.08.19	Entrance to studio moved. Wall and doors to plant room moved.	CV/PG
A	17.07.19	2 no. additional risers added to stairs in line with Factory Fit.	CV/PG
Rev	Date	Description	Drawn/Checked
PROJECT TITLE		DRAWING TITLE	
Abbeywood Retail Park Station Rd, Stoke, Gifford, Bristol, BS34 7JL		Fire Evacuation Plan Ground & Mezzanine Floor Plans	
DRAWING NO.	DATE	SCALE	REV
RSP/PG	20.06.19	1:00 @ A1	036
DRAWING PURPOSE			Rev
CONSTRUCTION			B

Pure Gym Ltd
 Town Centre House
 The Merlion Centre
 Leeds
 LS2 8LY
 e: architecture@puregym.com
 t: 0113 285 8787
 w: www.puregym.com