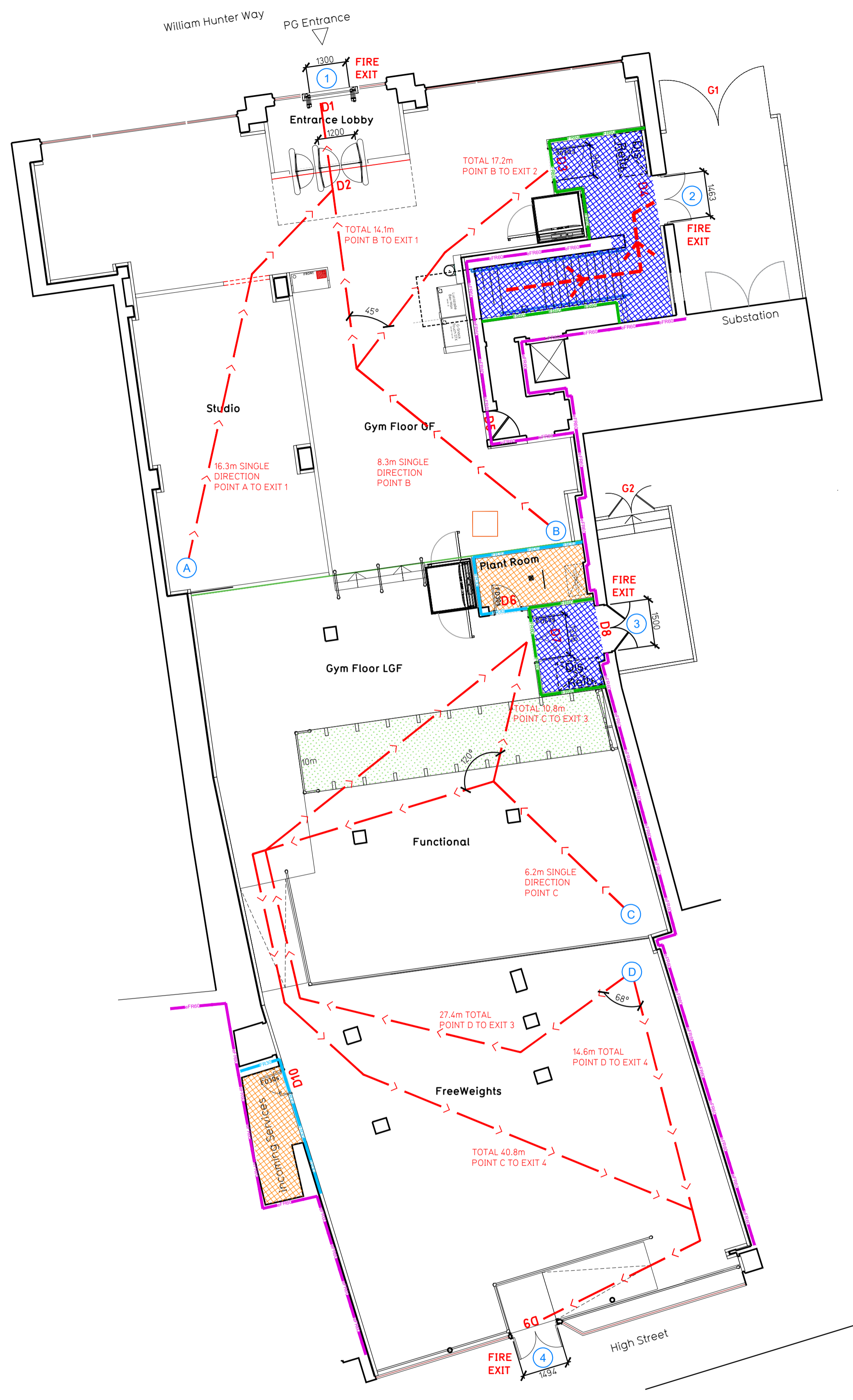
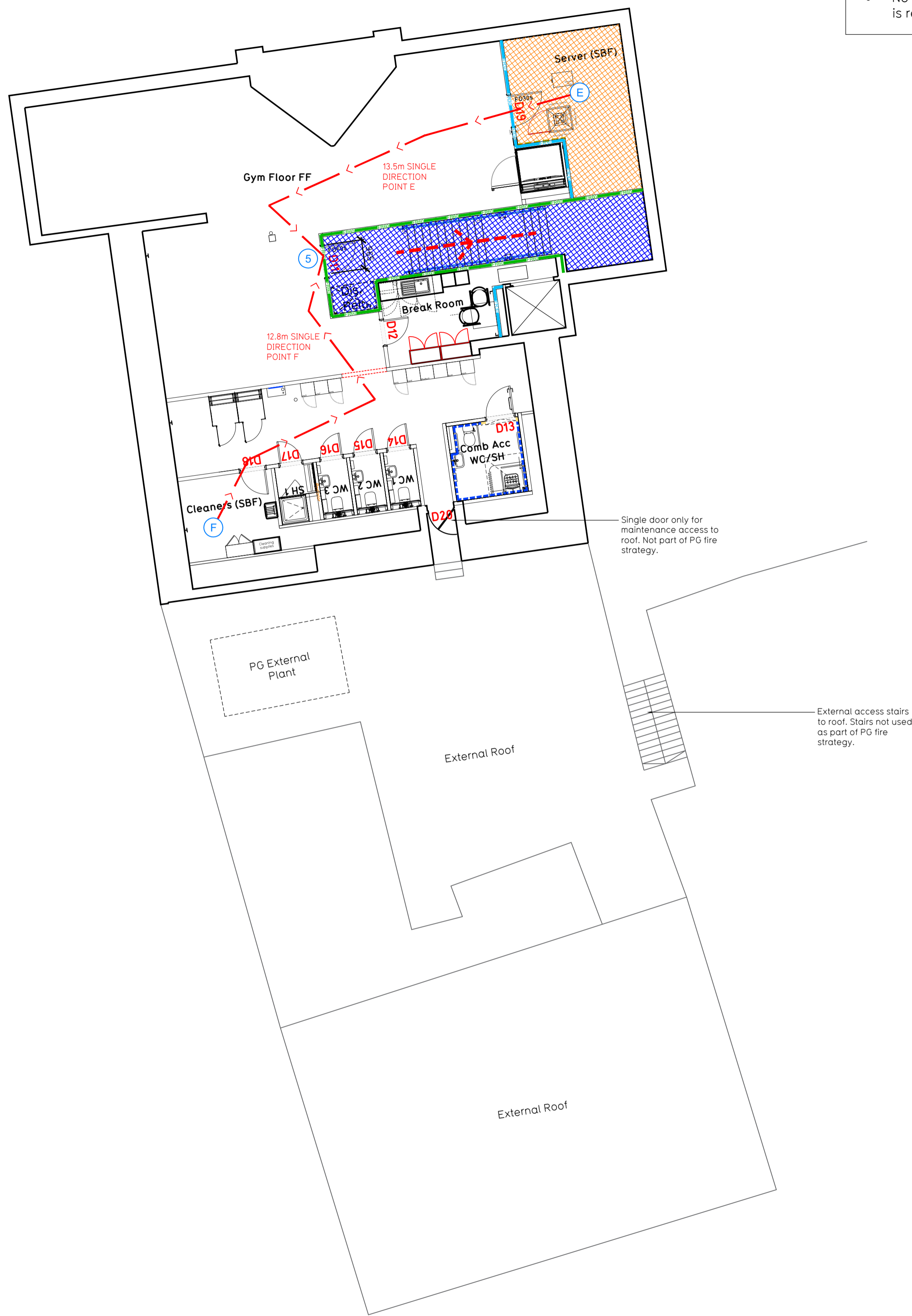


NOTE:

- Proposals must comply with all acoustic, fire & building regulation requirements
- No dimensions are to be scaled from this drawing. The contractor is responsible for checking all dimensions on site



Proposed Ground Floor Plan



Proposed First Floor Plan

Fire Evacuation Key

	Existing wall to achieve min 30 minute fire rating (suitability of wall to be confirmed on site by Pure Gym Main Contractor)		Fire Escape Route
	Existing wall to achieve min 60 minute fire rating (suitability of wall to be confirmed on site by Pure Gym Main Contractor)		Minimum Clear Widths
	New wall to achieve min of 30min fire rating		Exit No.
	New wall to achieve min of 60min fire rating		Shared Escape Route
	Protected areas: walls, floors, ceilings and doors to achieve 30minute fire resistant construction.		Fire Door Rating - 30min. / 60min.
	Protected areas: walls, floors, ceilings and doors to achieve 60 minute fire resistant construction.		FDK30 / AFDK / FDKL Fire Door Signage - Fire Door Keep Shut / Automatic Fire Door Keep Clear / Fire Door Keep Locked

Escape Route Widths:
 In line with Sections 3.21 & 3.22 of 'Approved Document Part B, Volume 2 - buildings other than dwellings' - the adjacent calculations provide justification for the clear opening widths for escape from each floor level/ room in accordance with Table 4 & Appendix C.

Ground Floor
 Exit 1 Clear Opening Width = 1300mm but restricted by D2 to 1200mm (allows 250 persons to escape)
 Exit 2 Clear Opening Width = 1463mm but restricted by D3 to 980mm (allows 110 persons to escape)
 Exit 3 Clear Opening Width = 1138mm (allows 277 persons to escape)
 Exit 4 Clear Opening Width = 1484mm (allows 308 persons to escape, largest opening to be discounted)
 Total Aggregate Width for Ground Floor (Less Largest Opening Width of 1484mm from Exit 4) = 1174mm (244 persons)

First Floor
 Exit 5 Clear Opening Width = 965mm (allows 110 persons to escape), however is limited to 60 persons due to single exit.
 Ground & First Floor Total Estimated Occupancy Capacity = 304 persons

Based on NIA of 6,832 sqft, the PureGym Max. Peak Occupancy = 100 persons
 Calculated using PureGym Fire Safety Occupancy Levels Forecast Tool.

The designed occupancy of the unit as calculated would allow a maximum number of 304 persons, which is larger than the total estimated occupancy target of 100 persons and is therefore thought to meet with the Approved Document Part B.

Fire Alarm
 Fire Alarm designed and installed to BS 5839. Smoke & heat detection / emergency lighting by specialist. Please refer to M&E engineer's drawings & specifications.

Escape Lighting
 Emergency escape lighted designed and installed in accordance with BS 5266: Part 1. Please refer to M&E Engineer's drawings for final layout and specification.

Fire Stopping
 All perimeter edges of first floor to be appropriately fire stopped to create compartment floor and protect structure. All services/drainage penetrations passing through fire rated compartment floor to be fire collared/sealed.

Escape Signage and emergency lighting is CDP under the M&E specification. Details of contractors proposals to be provided to Building Control Approved Inspector and Fire Officer within the Contractors Proposals Package, Clause 1.4

Rev	Date	Description	Drawn/Checked
<p>PROJECT TITLE Brentwood 81-85 High Street, Brentwood, CM14 4RR</p> <p>DRAWING TITLE Fire Evacuation Plan Ground & First Floor Plans</p> <p>DRAWN / CHECKED TH/IB</p> <p>DATE 30.08.24</p> <p>DRAWING NO. 2418-XX-003-FEP-C00</p> <p>DRAWING PURPOSE CONSTRUCTION</p> <p>SCALE 1:100 @ A1</p>			
			Pure Gym Ltd Town Centre House The Merion Centre Leeds LS2 8LY e: architecture@puregym.com w: www.puregym.com