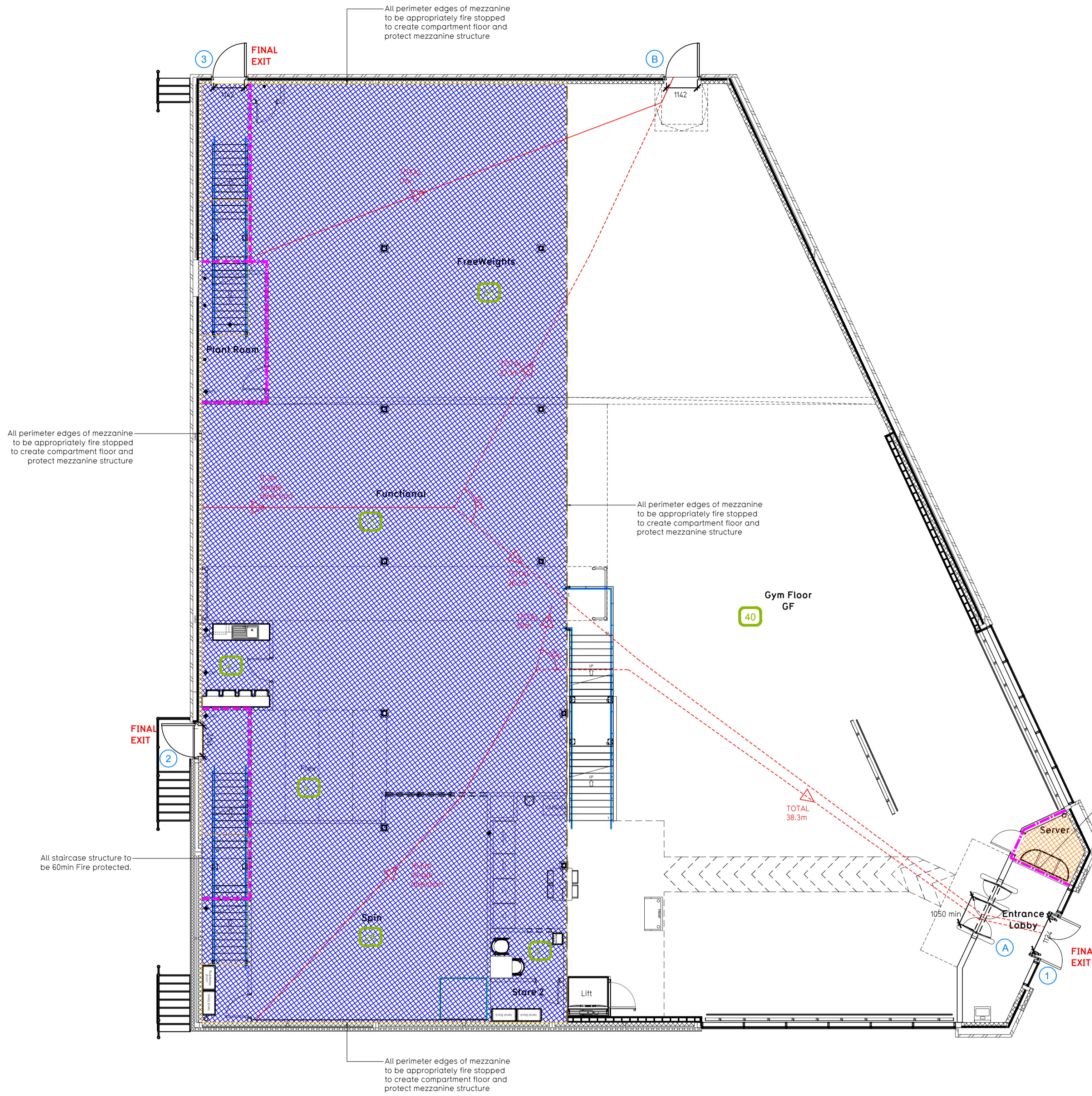
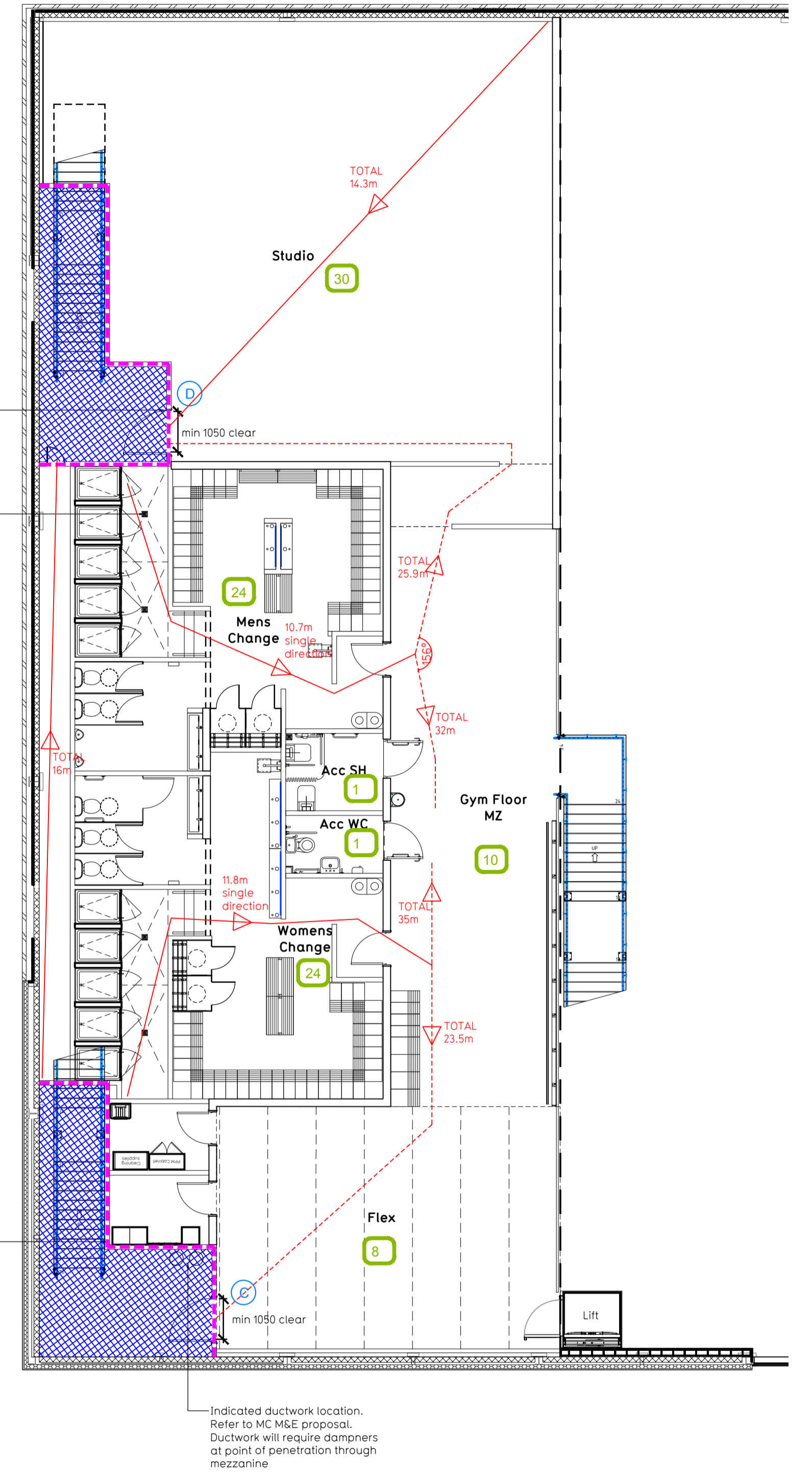


NOTE:

- Proposals must comply with all acoustic, fire & building regulation requirements
- No dimensions are to be scaled from this drawing. The contractor is responsible for checking all dimensions on site



Proposed Ground Floor Plan



Proposed Mezzanine Floor Plan

Fire Evacuation Key	
	Existing wall to achieve min 30 minute fire rating (suitability of wall to be confirmed on site by Pure Gym Main Contractor)
	Existing wall to achieve min 60 minute fire rating (suitability of wall to be confirmed on site by Pure Gym Main Contractor)
	New wall to achieve min of 30min fire rating
	New wall to achieve min of 60min fire rating
	Protected areas: walls, floors, ceilings and doors to achieve 30minute fire resistant construction.
	Protected areas: walls, floors, ceilings and doors to achieve 60 minute fire resistant construction.
	Occupancy level within area
	Fire Escape Route
	Minimum Clear Widths
	Exit No.
	Shared Escape Route

**Escape Route Widths:**  
In line with Sections 3.21 & 3.22 of Approved Document Part B, Volume 2 - buildings other than dwellingshouses - the adjacent calculations provide justification for the clear opening widths for escape from each floor level/ room in accordance with Table 4.6 Appendix C.

**Ground Floor:**  
Storey Exit A: Clear Opening Width = 1050mm (allows 220 persons to escape)  
Final Exit B: Clear Opening Width = 142mm (allows 238 persons to escape, largest opening to be discounted)  
Total Aggregate Width for Floor (Less Largest Opening Width of 142mm from EXIT B) = 1950mm  
Ground Floor Total Estimated Occupancy Capacity = 109 Persons  
EXIT A provides a min. width of 1050mm and would allow a max. No. of 220 persons to escape, which is larger than the total estimated occupancy capacity of 109 Persons and is therefore thought to meet with the Approved Document Part B.

**Mezzanine Floor:**  
Storey Exit C: Clear Opening Width = 1050mm (allows 220 persons to escape)  
Storey Exit D: Clear Opening Width = 1050mm (allows 220 persons to escape, largest opening to be discounted)  
Total Aggregate Width for Floor (Less Largest Opening width of 1050mm from EXIT D) = 1950mm  
Mezzanine Floor Total Estimated Occupancy Capacity = 94 Persons  
EXIT C provides a min. width of 1050mm and would allow a max. No. of 220 persons to escape, which is larger than the total estimated occupancy capacity of 94 Persons and is therefore thought to meet with the Approved Document Part B.

**Final Exits:**  
Exit 1: Clear Opening Width = 1134mm (escape occupancy limited by Storey Exit A = 220 persons)  
Exit 2: Clear Opening Width = 142mm (escape occupancy limited by Storey Exit C = 220 persons)  
Exit 3: Clear Opening Width = 1142mm (escape occupancy limited by Storey Exit D = 220 persons)  
Exit 1 caters for ground floor only (via exit A) and allows the ground floor occupancy to escape and is thought to meet with the Approved Document Part B.  
Exit 2 caters for mezzanine floor only (via exit C) and allows the mezzanine floor occupancy to escape and is thought to meet with the Approved Document Part B.  
Exit 3 caters for mezzanine floor only (via exit D) and allows the mezzanine floor occupancy to escape and is thought to meet with the Approved Document Part B.

**Fire Alarm:**  
Fire Alarm designed and installed to BS 5839: Smoke & heat detection / emergency lighting by specialist. Please refer to M&E engineer's drawings / specifications.

**Escape Lighting:**  
Emergency escape lighting designed and installed in accordance with BS 5266: Part 1. Please refer to M&E Engineer's drawings for final layout and specification.  
Escape Signage and emergency lighting is COP under the M&E specification. Details of contractors proposals to be provided to Building Control Approved Inspector and Fire Officer within the Contractors Proposals Package, Clause 14.

Rev	Date	Description	Drawn/Checked
C01	14.02.22	Layout updated to reflect General Arrangement Plan Rev C01. Fire escape from Mezzanine flex area increased in size to incorporate MC ductwork proposals	IR/PG
PROJECT TITLE		DRAWING TITLE	
Nottingham West Bridgford Unit 4, Willford Lane Retail Park, Nottingham, NG2 7DY		Fire Evacuation Plan Ground/Mezzanine Floor Plans	
DRAWING NO.		DRAWING REV.	
HIIR		003 - FEP	
DRAWING PURPOSE			
CONSTRUCTION			
Rev			
C01			

Pure Gym Ltd  
Town Centre House  
The Merrion Centre  
Leeds  
LS2 8LY  
e: architecture@puregym.com  
t: 0113 285 8787  
w: www.puregym.com