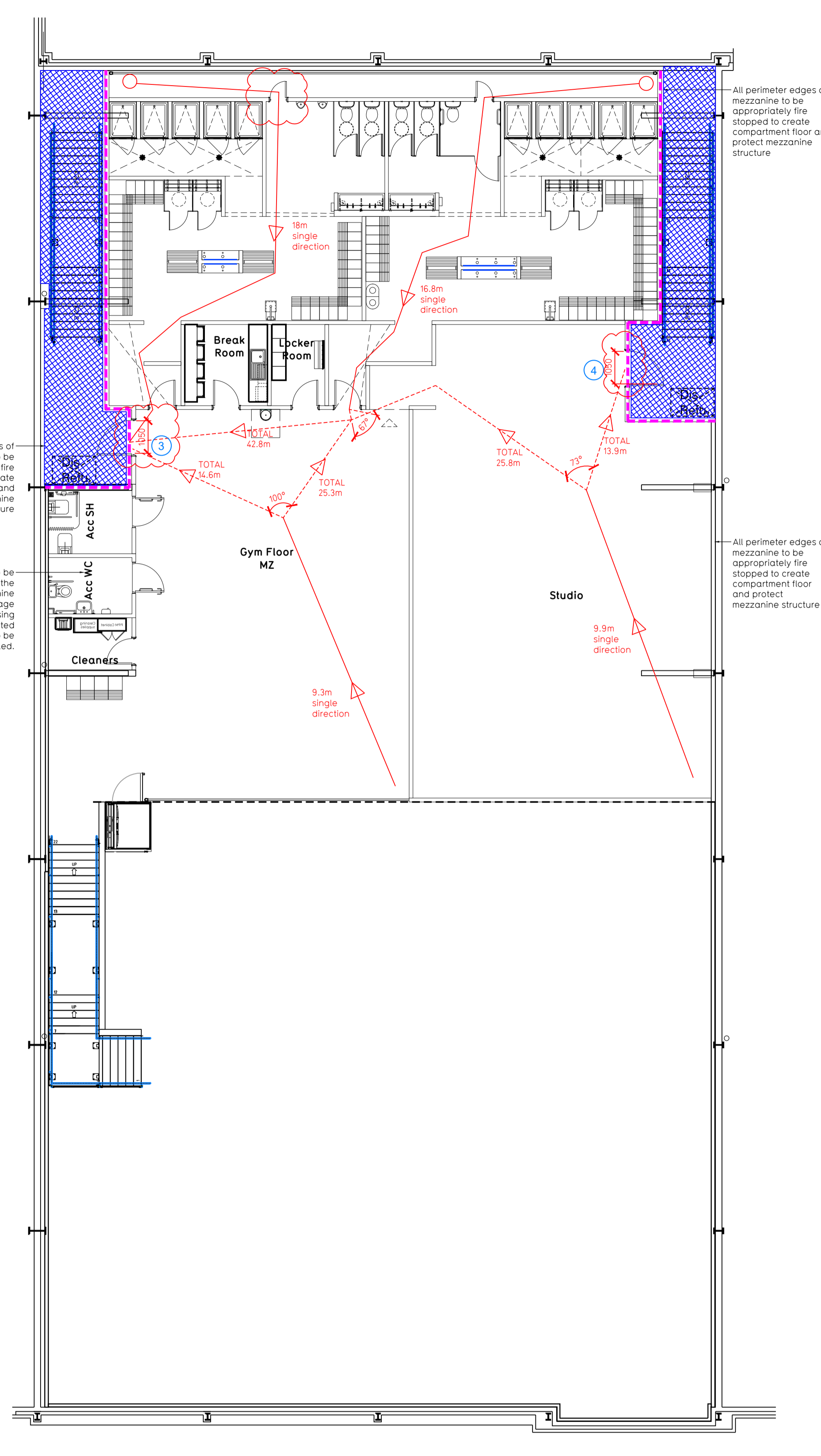


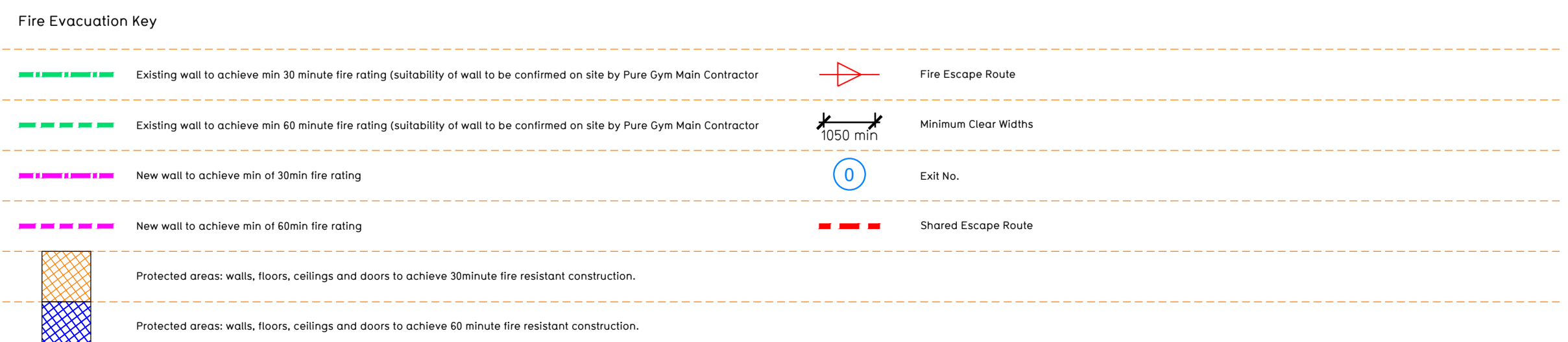
Proposed Ground Floor Plan



Proposed Mezzanine Floor Plan

NOTE:

- Proposals must comply with all acoustic, fire & building regulation requirements
- No dimensions are to be scaled from this drawing. The contractor is responsible for checking all dimensions on site



Escape Route Widths:
 In line with Sections 3.21 & 3.22 of 'Approved Document Part B, Volume 2 - buildings other than dwellings' - the adjacent calculations provide justification for the clear opening widths for escape from each floor level/ room in accordance with Table 4 & Appendix C.

Ground Floor
 Exit 1 Clear Opening Width = 1060mm (allows 222 persons to escape)
 Exit 2 Clear Opening Width = 1240mm (allows 288 persons to escape, largest opening to be discounted)
 Total Aggregate Width for Floor (Less Largest Opening Width of 1240mm from EXIT NO2) = 1060mm. This allows 222 persons to escape from ground floor.

Mezzanine Floor
 Exit 1 Clear Opening Width = 1392mm (allows 288 persons to escape)
 Exit 2 Clear Opening Width = 1392mm (allows 288 persons to escape, largest opening to be discounted)
 Total Aggregate Width for Mezzanine floor (Less Largest Opening Width of 1392mm from EXIT NO2) = 1392mm. This allows 288 persons to escape from mezzanine level floor.

Combined capacity of Ground Floor and Mezzanine level = 510 persons
 The combined opening widths of Ground Floor and Mezzanine level allows for 510 persons to escape which is greater than the estimated building capacity of 222 persons and is therefore thought to meet with the Approved Document Part B.

Sprinklers
 System design and installed in compliance with BS EN 12845:2015 & LPC Technical Bulletins

Fire Alarm
 Fire Alarm designed and installed to BS 5839. Smoke & heat detection / emergency lighting by specialist. Please refer to MSE Engineer's drawings / specifications.

Escape Lighting
 Emergency escape lighting designed and installed in accordance with BS 5266: Part 1. Please refer to MSE Engineer's drawings for final layout and specification.

Smoke Extract
 Smoke Extract System to be designed and installed in accordance with BS 7346: Part 8. Please refer to MSE Engineer's drawings for final layout and specification.

Escape Signage and emergency lighting is CDP under the MSE specification. Details of contractors proposals to be provided to Building Control Approved Inspector and Fire Officer within the Contractors Proposals Package, Clause 14.

Rev	Date	Description	Drawn/ Checked
C02	24.08.22	Male urinal update	KL/IR
C01	29.07.22	Clear opening update	KL/IR
DRAWING PURPOSE			
SK/IR	19.04.22	1:100 @ A1	2120
DRAWING TITLE			Rev
Durham - Arnison Unit 2, Mercia Retail Park, Abbey Road, DH1 5GE			003-FEP
Fire Evacuation Plan Ground and First Floor Plans			C02
CONSTRUCTION			

Pure Gym Ltd
 Town Centre House
 The Merrion Centre
 Leeds
 LS2 8LY
 e: architecture@puregym.com
 t: 0113 285 8787
 w: www.puregym.com