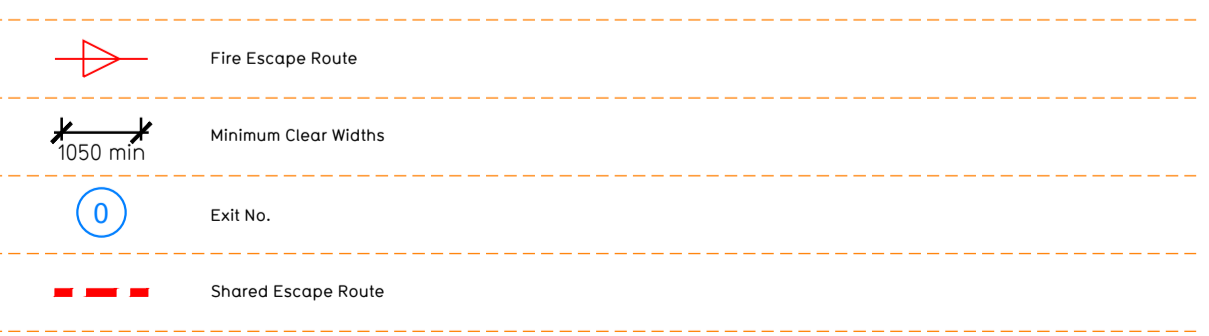
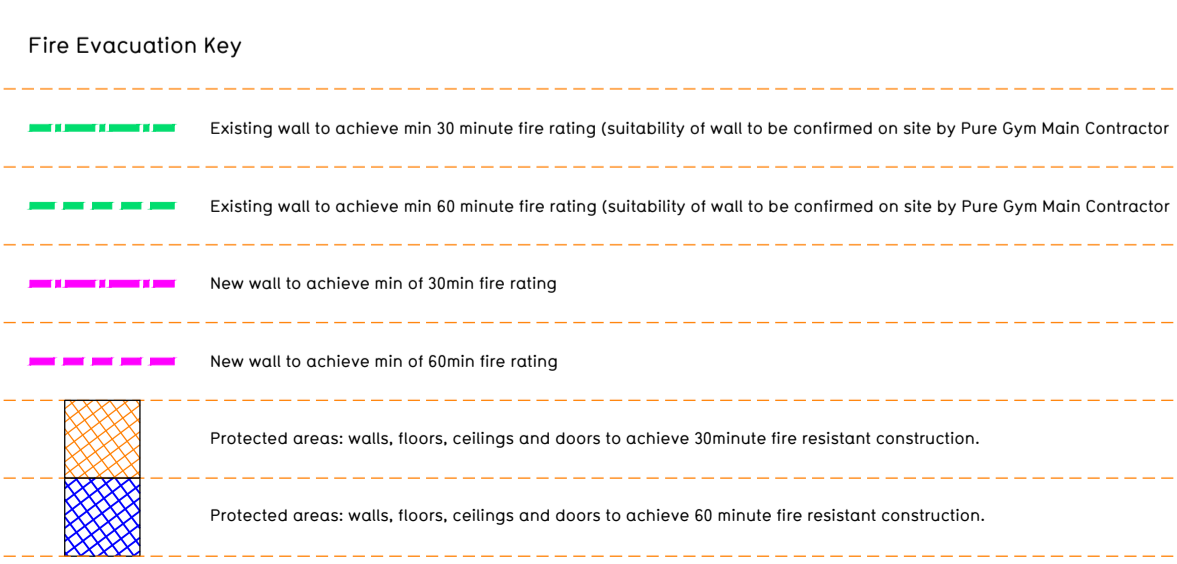
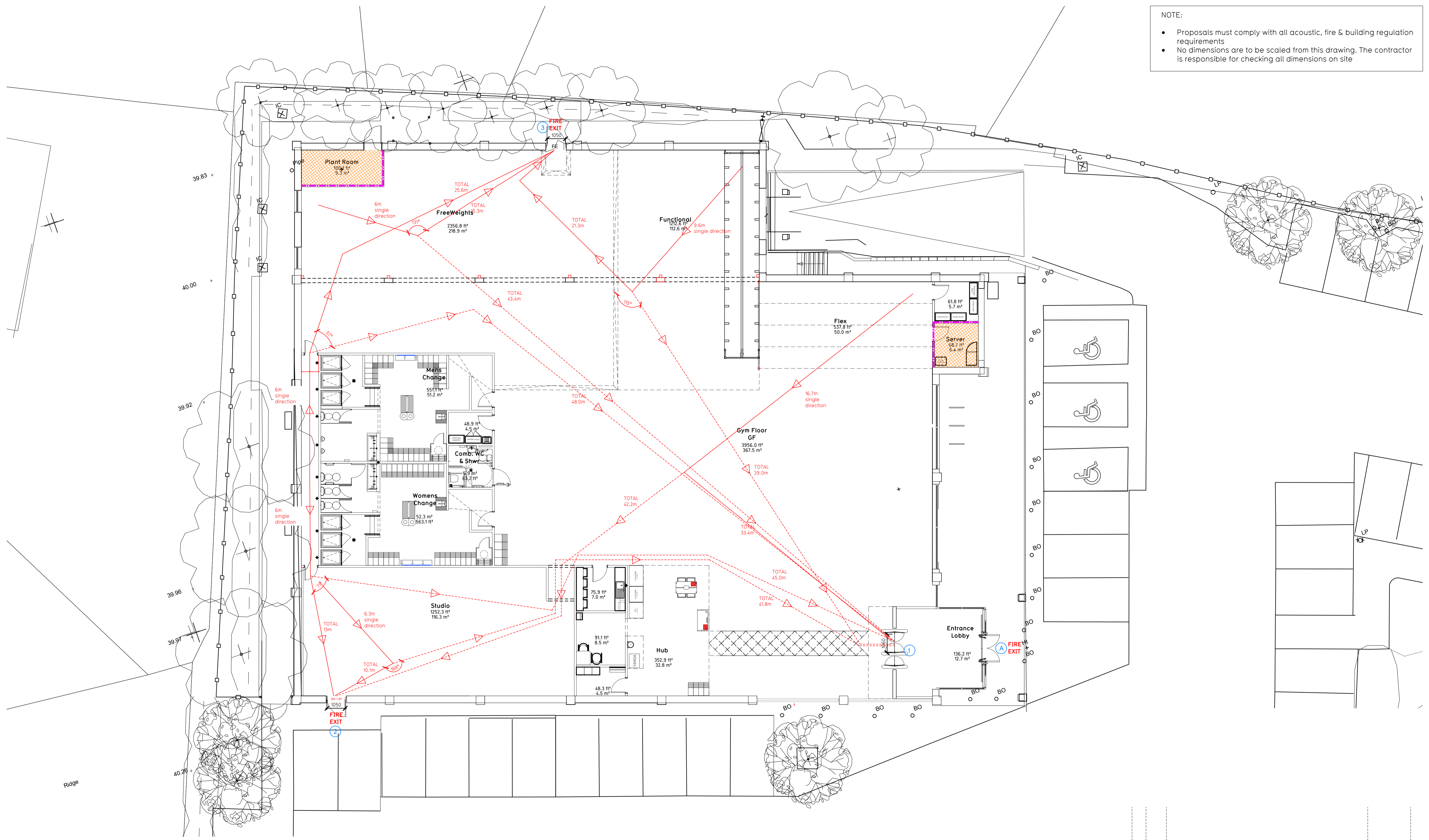


NOTE:

- Proposals must comply with all acoustic, fire & building regulation requirements
- No dimensions are to be scaled from this drawing. The contractor is responsible for checking all dimensions on site



**Escape Route Widths:**  
 In line with Sections 3.21 & 3.22 of 'Approved Document Part B, Volume 2 - buildings other than dwellings' - the adjacent calculations provide justification for the clear opening widths for escape from each floor level/ room in accordance with Table 4 & Appendix C.

**Ground Floor**  
 Exit 1 Clear Opening Width = 1060mm (allows 222 persons to escape)  
 Exit 2 Clear Opening Width = 1050mm (allows 210 persons to escape (largest opening to be discounted))  
 Exit 3 Clear Opening Width = 1050mm (allows 210 persons to escape (largest opening to be discounted))

Ground Floor Total Estimated Occupancy Capacity = 191 Persons

Exit NO 2 and Exit no 3 creates a combined escape capacity of 440 Persons, which is larger than the total estimate occupancy capacity of 190 Persons, and is therefore thought to meet with the Approved Document Part B.

**Sprinklers**  
 System design and installed in compliance with BS EN 12845:2015 & LPC Technical Bulletins

**Fire Alarm**  
 Fire Alarm designed and installed to BS 5839. Smoke & heat detection / emergency lighting by specialist. Please refer to MSE Engineer's drawings / specifications.

**Escape Lighting**  
 Emergency escape lighted designed and installed in accordance with BS 5266: Part 1. Please refer to MSE Engineer's drawings for final layout and specification.

**Smoke Extract**  
 Smoke Extract System to be designed and installed in accordance with BS 7346: Part 8. Please refer to MSE Engineer's drawings for final layout and specification.

**Escape Signage and emergency lighting** is CDP under the MSE specification. Details of contractors proposals to be provided to Building Control Approved Inspector and Fire Officer within the Contractors Proposals Package, Clause 14.

**Void Detection**  
 Void Detection System to be designed and installed in accordance with BS 5839: Part 1. Please refer to MSE Engineer's drawings for final layout and specification.

Rev	Date	Description	DRAWING TITLE	Drawn/Checked
			<b>Knabersborough</b> Unit 1, York Road, Knabersborough, HG5 0TZ	<b>Fire Evacuation Plan</b> Ground and First Floor Plans
SK/IR	05.05.22		SCALE: 1:100 @ A1	2108
DRAWING PURPOSE			003-FEP	Rev
<b>CONSTRUCTION</b>				C01
			Pure Gym Ltd Town Centre House The Merion Centre Leeds LS2 8LY e: <a href="mailto:architecture@puregym.com">architecture@puregym.com</a> t: 0113 285 8787 w: <a href="http://www.puregym.com">www.puregym.com</a>	