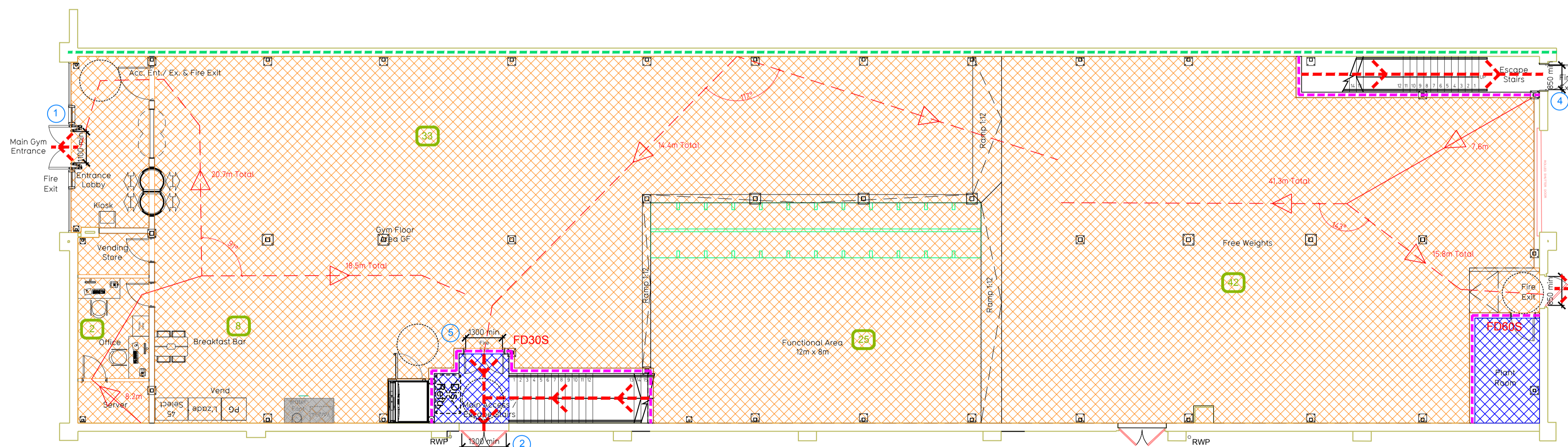


Proposed Mezzanine Floor Plan



Proposed Ground Floor Plan

Fire Evacuation Key

	Existing wall to achieve min 60 minute fire rating (suitability of wall to be confirmed on site by Pure Gym Main Contractor)		Occupancy level within area
	New wall to achieve min of 60min fire rating		Fire Escape Route
	Protected areas: ceiling/mezzanine floor to achieve 60minute fire resistant construction.		Minimum Clear Widths
	Protected areas: walls, floors, ceilings to achieve 60 minute fire resistant construction, doors as specified.		Exit No.
			Protected Escape Route

Escape Route Widths
 In line with Sections 3.21 & 3.22 of 'Approved Document Part B, Volume 2 - buildings other than dwellings' - the adjacent calculations provide justification for the clear opening widths for escape from each floor level/ room in accordance with Table 4 & Appendix C.

Fire Alarm
 Fire Alarm designed and installed to BS 5839. Smoke & heat detection / emergency lighting by specialist. Please refer to M&E engineer's drawings / specifications.

Escape Lighting
 Emergency escape lighting designed and installed in accordance with BS 5266: Part 1. Please refer to M&E Engineer's drawings for final layout and specification.

First Floor
 Exit 6 Clear Opening Width = 1300mm (allows 220 persons to escape)
 Exit 7 Clear Opening Width = 850mm (allows 110 persons to escape)
 Exit 8 Largest opening and discounted.
 Total Aggregate Width for Floor (Less Largest Opening Width of 1300mm from Exit 6) = 850mm
 First Floor Total Estimated Occupancy Capacity = 110 Persons
 Exit 7 provides a min. width of 850mm and would allow a max. No. of 110 persons to escape, which is sufficient for the total estimated occupancy capacity of 110 Persons and is therefore thought to meet with the Approved Document Part B.

Ground Floor
 Exit 1 Clear Opening Width = 1100mm (allows 220 persons to escape)
 Exit 5 Clear Opening Width = 1300mm (allows 220 persons to escape)
 Exit 3 Clear Opening Width = 850mm (allows 110 persons to escape)
 Exit 5 Largest opening and discounted.
 Total Aggregate Width for doors (Less Largest Opening Width of 1300mm from Exit 5) = 1950mm
 Ground Floor Total Estimated Occupancy Capacity = 110 Persons
 Exit 1 and 3 provides a min. width of 1950mm and would allow a max. No. of 220 persons to escape, which is sufficient for the total estimated occupancy capacity of 110 Persons and is therefore thought to meet with the Approved Document Part B.

Final Exit
 Exit 1 serves only the ground floor having a clear width of at least 1100mm and have an escape capacity of 220 people. Exceeds the required 110 occupancy of the floor.
 Exit 2 serves both the ground floor and first floor having a clear width of at least 1300mm and have a combined escape capacity of 220 people.
 Exit 3 serves only the first floor having a clear width of at least 850mm and have an escape capacity of 110 people.

Rev	Date	Description	Drawn/	Checked/
<p>Salisbury Unit 3 Boone Retail Park, Southarston Road, Salisbury, Wiltshire, SP1 2LR</p> <p>Fire Escape Plan Ground & Mezzanine Floor Plans</p> <p>DATE: 28.03.19 SCALE: 1:100@A1 JOB NO: IA-LBF-025 DRAWING NO: 010-FEP</p> <p>TENDER</p> <p>Pure Gym Ltd Town Centre House The Merlion Centre Leeds LS2 8LY w: architecture@puregym.com t: 0113 256 9707 w: www.puregym.com</p>				