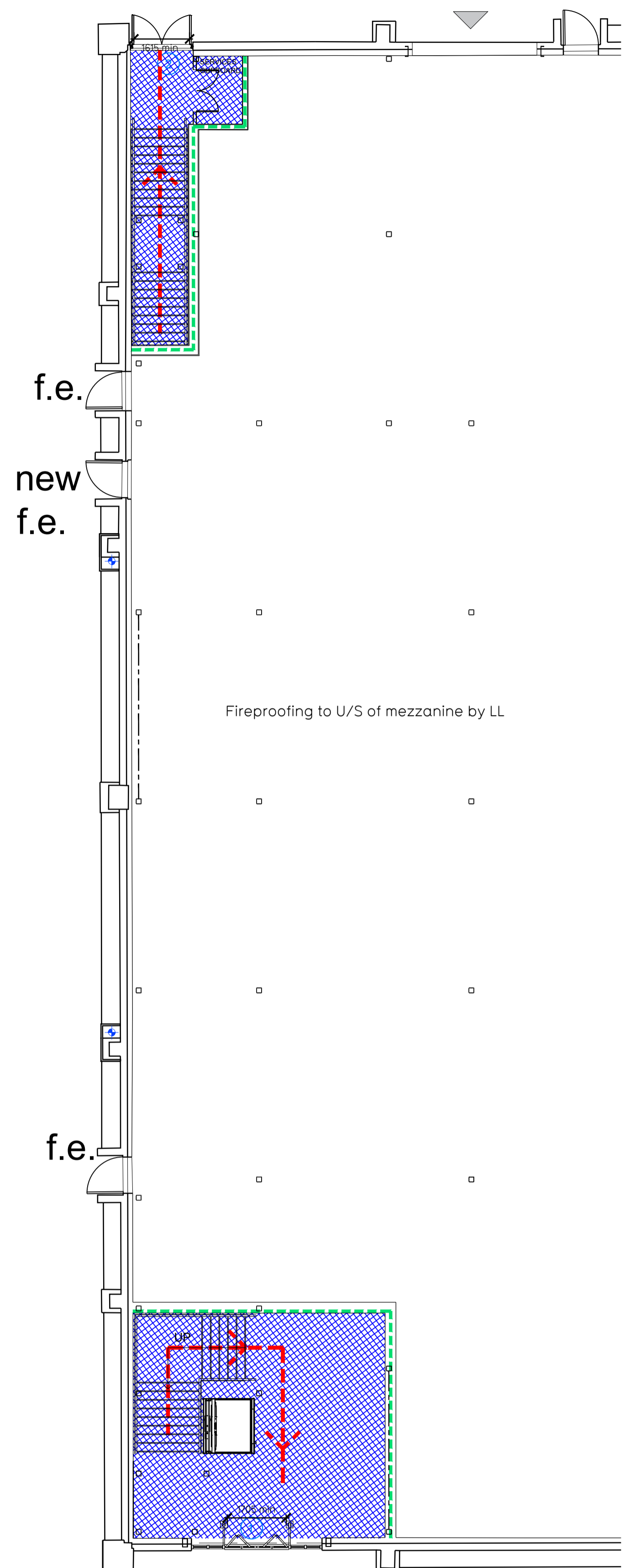
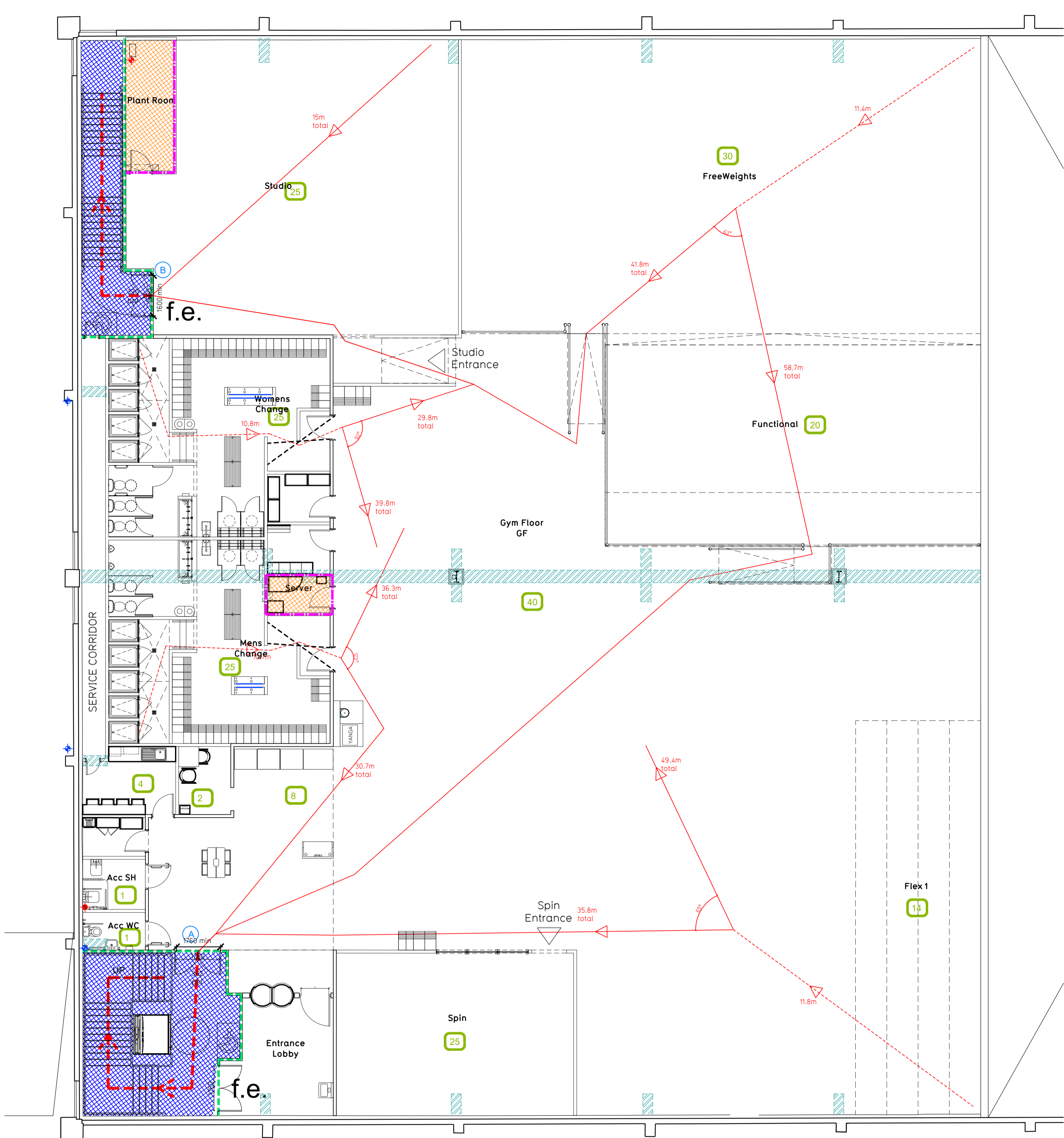


NOTE:  
 - Proposals must comply with all acoustic, fire & building regulation requirements  
 - No dimensions are to be scaled from this drawing. The contractor is responsible for checking all dimensions on site



Proposed Ground Floor Plan



Proposed Mezzanine Floor Plan

Fire Evacuation Key

- Existing wall to achieve min 30 minute fire rating (suitability of wall to be confirmed on site by Pure Gym Main Contractor)
- Existing wall to achieve min 60 minute fire rating (suitability of wall to be confirmed on site by Pure Gym Main Contractor)
- New wall to achieve min of 30min fire rating
- New wall to achieve min of 60min fire rating
- Protected areas: walls, floors, ceilings and doors to achieve 30minute fire resistant construction.
- Protected areas: walls, floors, ceilings and doors to achieve 60 minute fire resistant construction.

- Occupancy level within area
- Fire Escape Route
- Minimum Clear Widths
- Exit No.
- Shared Escape Route

**Escape Route Widths:**  
 In line with Sections 3.21 & 3.22 of 'Approved Document Part B, Volume 2 - buildings other than dwellings' - the adjacent calculations provide justification for the clear opening widths for escape from each floor level/ room in accordance with Table 4 & Appendix C.

**Mezzanine Floor**  
 Exit A Clear Opening Width = 1760mm (Largest opening to be discounted)  
 Exit B Clear Opening Width = 1600mm (allows 330 persons to escape)

Total Aggregate Width for Floor (Less Largest Opening Width of 1760mm from EXIT A) = 1600mm  
 Mezzanine Floor Total Estimated Occupancy Capacity: 236 Persons

**EXIT B** provides a min. width of 1600mm and would allow a max. No. of 330 persons to escape, which is larger than the total estimated occupancy of 236 Persons and is therefore thought to meet with the Approved Document Part B. 236 persons is calculated using the Pure Gym Average Peak Occupancy forecasting tool for a gym at this site.

**Final Exits**  
 EXIT 1 Clear Opening Width = 1705mm (Allows +236 persons to escape)  
 EXIT 2 Clear Opening Width = 1615mm (allows +236 persons to escape)

EXIT 1 caters for the mezzanine floor only and allows the entire mezzanine floor to escape. Therefore, it is thought to meet with the Approved Document Part B.  
 EXIT 2 caters for the mezzanine floor only and allows the entire mezzanine floor to escape. Therefore, it is thought to meet with the Approved Document Part B.

Document Part B.  
**Fire Alarm**  
 Fire Alarm designed and installed to BS 5839: Smoke & heat detection / emergency lighting by specialist. Please refer to M&E engineer's drawings / specifications.  
**Escape Lighting**  
 Emergency escape lighting designed and installed in accordance with BS 5266: Part 1. Please refer to M&E Engineer's drawings for final layout and specification.  
 Escape signage and emergency lighting is CDP under the M&E specification. Details of contractors proposals to be provided to Building Control Approved Inspector and Fire Officer within the Contractors Proposals Package, clause 14

Rev	Date	Description	Rev	Checked

PROJECT TITLE: Cardiff Western Ave Unit A, Western Ave RP, Excelsior Rd, CF14 3AT  
 DRAWING TITLE: Fire Evacuation Plan Ground & Mezzanine Floor Plans  
 DRAWING CODE: HI/CS  
 DATE: 01.10.21  
 SCALE: 1:100 @ A1  
 DRAWING NO: 003 - FEP  
 DRAWING PURPOSE: CONSTRUCTION  
 Rev: C00

PUREGYM  
 Pure Gym Ltd  
 Town Centre House  
 The Meriton Centre  
 Leeds  
 LS2 8LY  
 e: architecture@puregym.com  
 t: 0113 285 8787  
 w: www.puregym.com