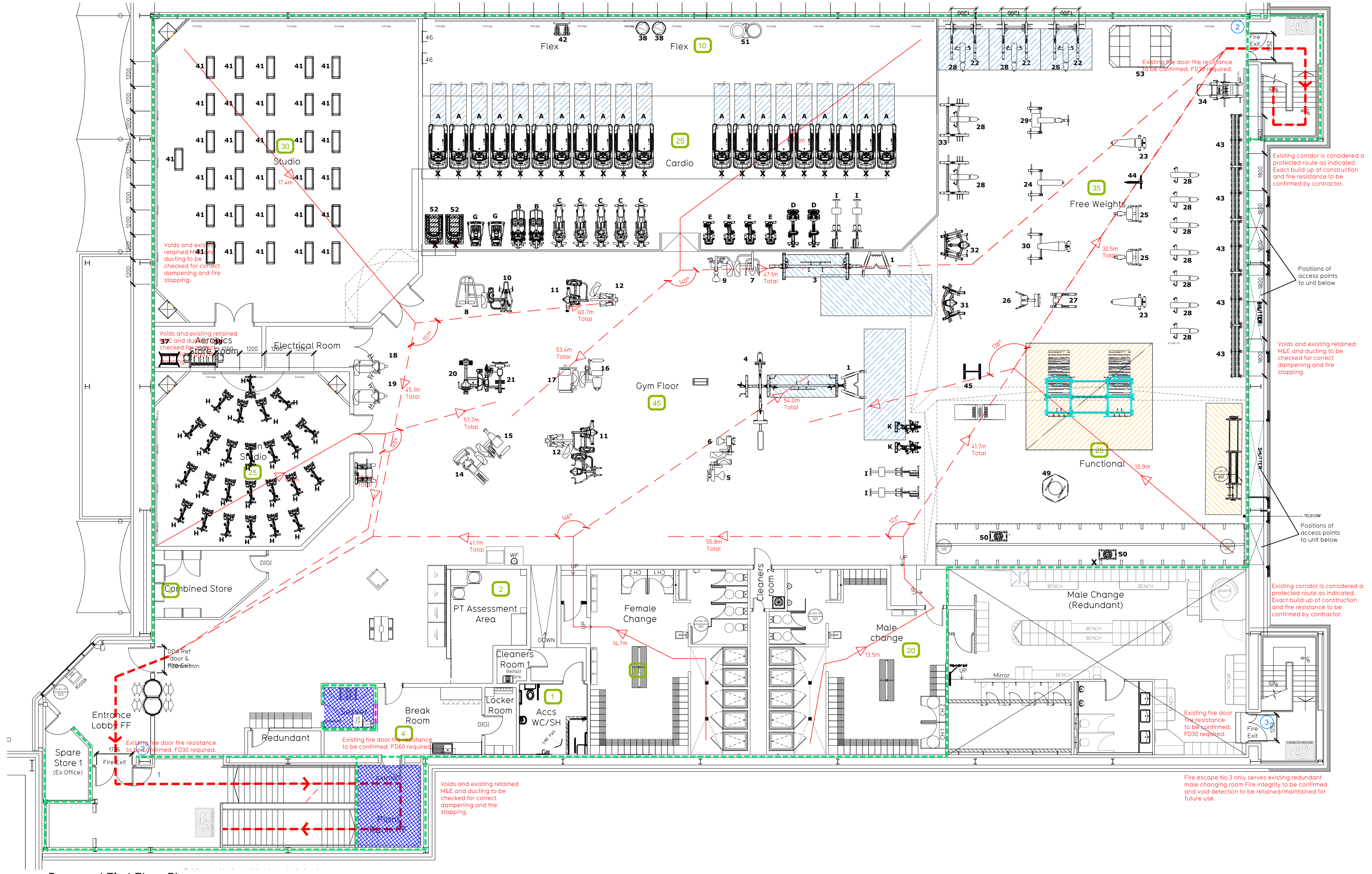


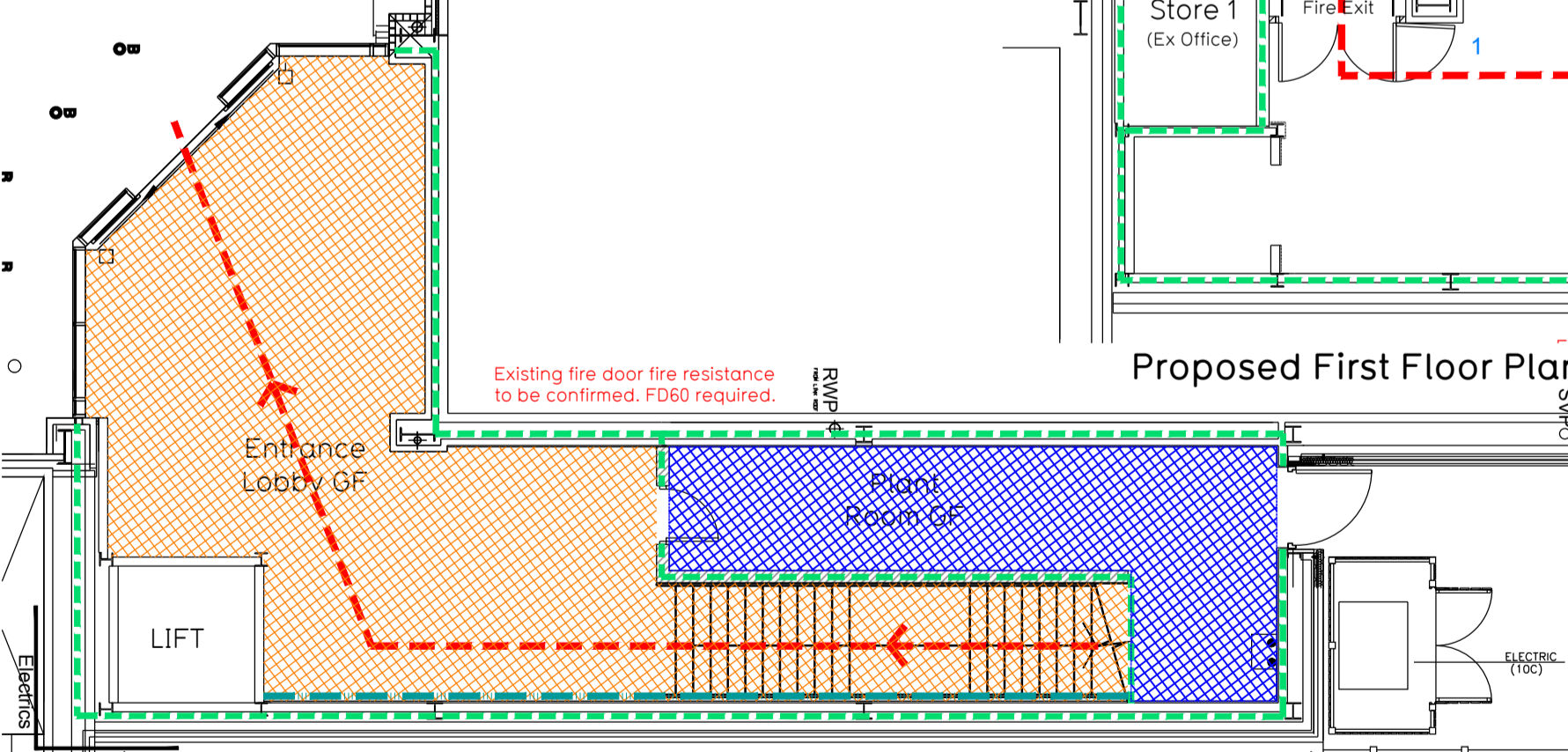
NOTE:

- Proposals must comply with all acoustic, fire & building regulation requirements
- No dimensions are to be scaled from this drawing. The contractor is responsible for checking all dimensions on site

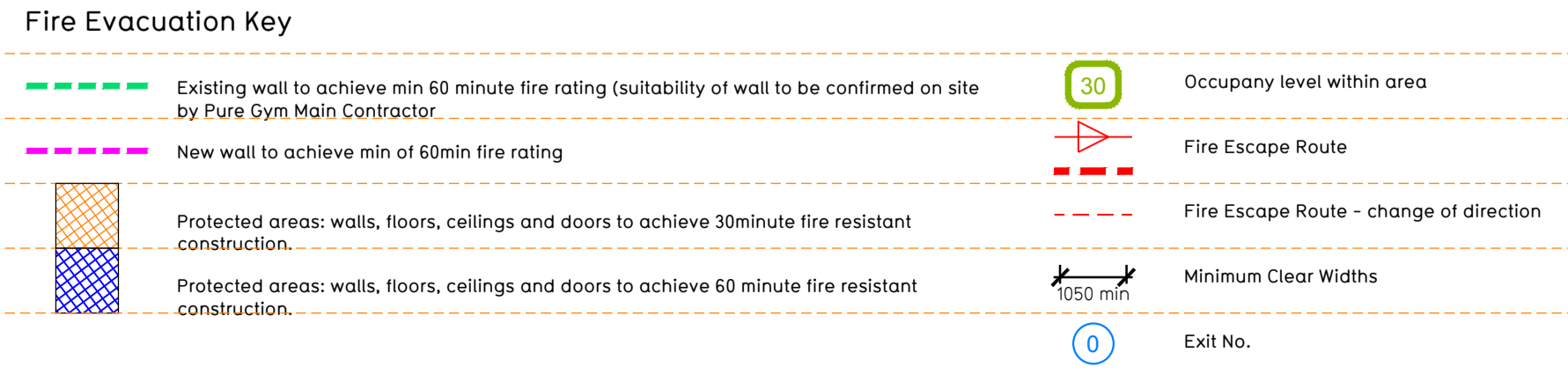
Drawings to be read in conjunction with Aylesbury site notes.
 Drawings were not surveyed by Pure Gym but supplied via landlord and not checked.
 Dimensions will require verification on site.



Proposed First Floor Plan



Proposed Ground Floor Plan



Fire Evacuation Key

Sprinklers
 System design and installed in compliance with BS EN 12845:2015 & LPC Technical Bulletins

Fire Alarm
 Fire Alarm designed and installed to BS 5839: Smoke & heat detection / emergency lighting by specialist. Please refer to M&E engineer's drawings / specifications.

Escape Lighting
 Emergency escape lighted designed and installed in accordance with BS 5266: Part 1. Please refer to M&E Engineer's drawings for final layout and specification.

Smoke Extract
 Smoke Extract System to be designed and installed in accordance with BS 7346: Part 8. Please refer to M&E Engineer's drawings for final layout and specification.

Rev	Date	Description	Drawn/Checked
A	15.10.19	Doors added to changing rooms. Rooms defined in line with BOLT. Second entrance pod provision removed. Lockers moved. Flex area increased. Rastled areas removed in changing rooms.	EK/PG

PROJECT TITLE	Aylesbury Shopping Park		
PROJECT ADDRESS	Unit 10C, Cambridge Ct, Aylesbury, HP20 1DG		
DRAWING TITLE	Fire Evacuation Plan		
DRAWING NO.	1A-LF-045	ISSUE NO.	1003 - FEP
DATE	02.09.19	SCALE	1/200 @ A1
DRAWING PURPOSE	CONSTRUCTION	REV	A

Pure Gym Ltd
 Town Centre House
 The Merion Centre
 Leeds
 LS2 6LY

architecture@puregym.com
 t: 0113 285 6787
 www.puregym.com