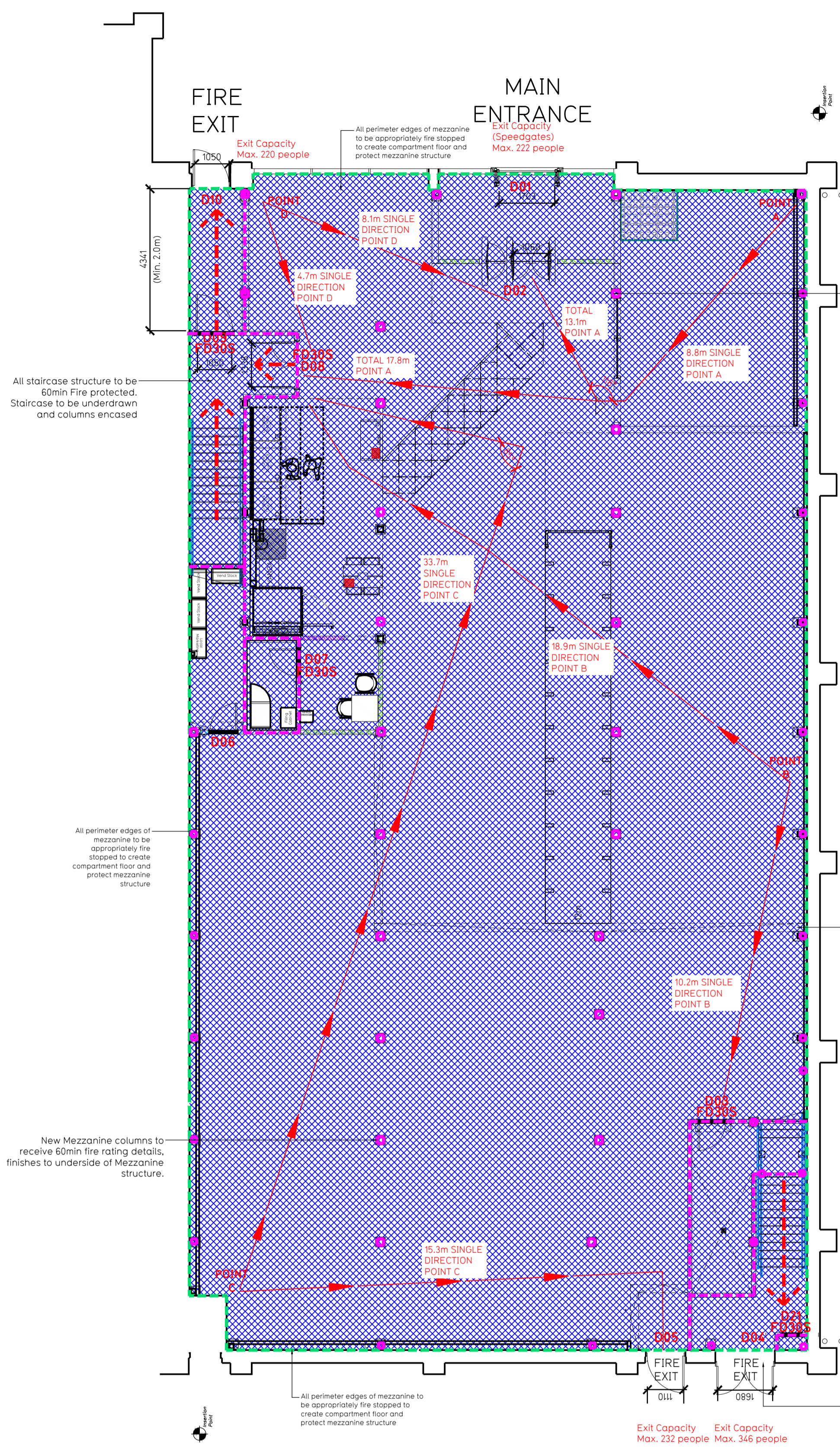
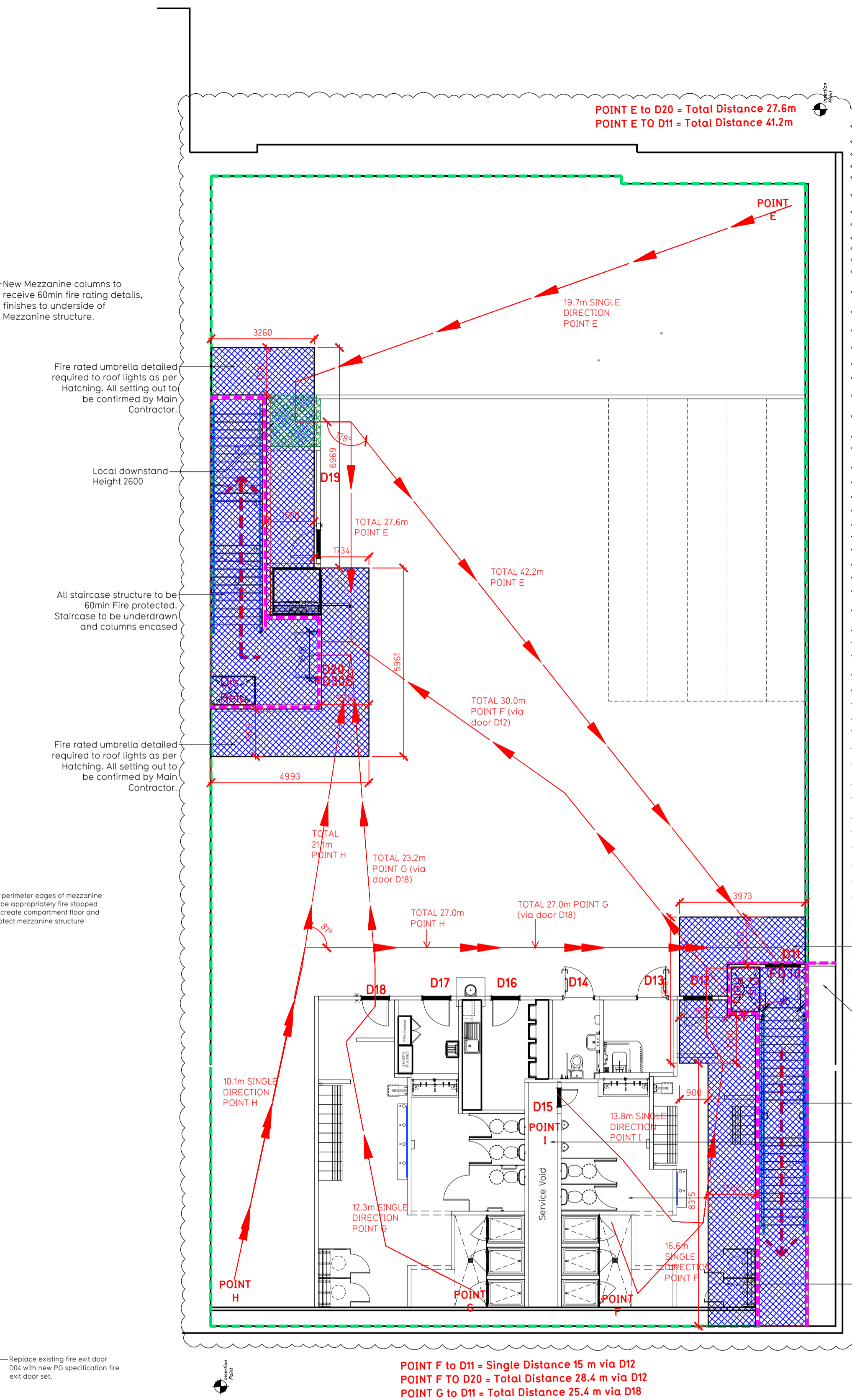


NOTE:

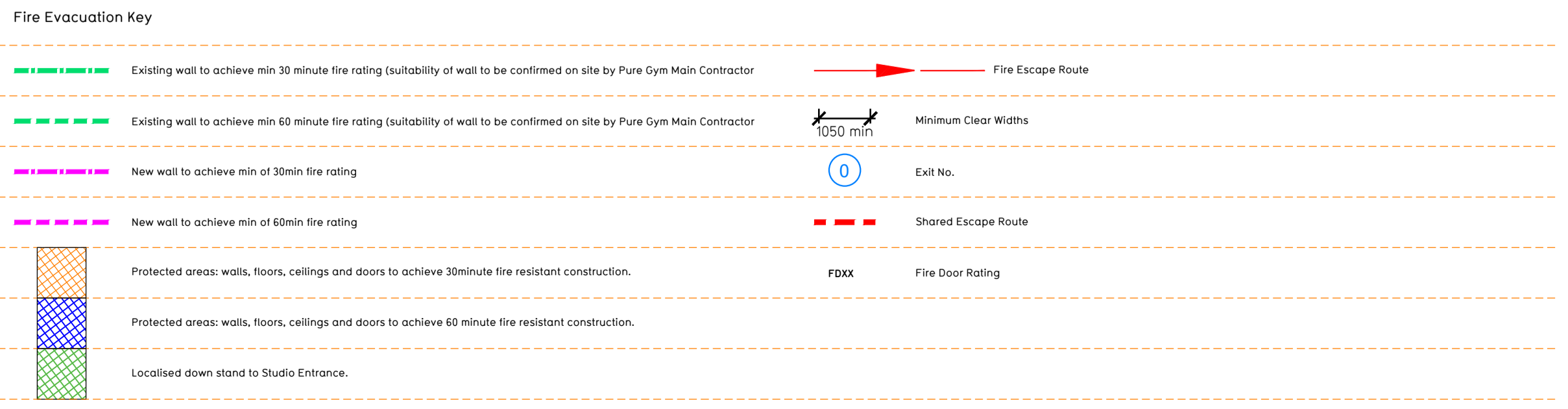
- Proposals must comply with all acoustic, fire & building regulation requirements
- No dimensions are to be scaled from this drawing. The contractor is responsible for checking all dimensions on site



Proposed Ground Floor Plan



Proposed Mezzanine Floor Plan



Escape Route Widths:
 In line with Sections 3.21 & 3.22 of 'Approved Document Part B, Volume 2 - buildings other than dwellings' - the adjacent calculations provide justification for the clear opening widths for escape from each floor level/room in accordance with Table 4.4 Appendix C.

Ground Floor
 Final Exit D02 Clear Opening Width = 1060mm (allows 222 persons to escape)
 Final Exit D05 Clear Opening Width = 1100mm (allows 232 persons to escape)
 Final Exit D08 Clear Opening Width = 1338mm (allows 277 persons to escape) (largest opening to be discounted)

Total Aggregate Width for Floor (Less Largest Opening Width of 1338mm from FINAL EXIT D08) = 1085mm
 Allows 416 persons to escape.

Mezzanine Floor
 Final Exit D10 Fed by Storey Exit D03, Clear Opening Width = 1510mm (allows 177 persons to escape)
 Final Exit D14 Fed by Storey Exit D11, Clear Opening Width = 1100mm (allows 234 persons to escape) (largest opening to be discounted)

Total Aggregate Width for Floor (Less Largest Opening Width of 1510mm from STOREY EXIT D03) = 1100mm

Total
 Ground Floor = 474 persons to escape
 Mezzanine Floor = 234 persons to escape
 Total = 708 persons to escape

Based on a NIA of 13,483sqm, the Puregym peak Occupancy Target = 294 Persons
 Calculated using Puregym Fire Safety Occupancy Levels Forecast Tool.

The designed occupancy of the unit as calculated would allow a max. No. of 708 persons to escape, which is larger than the total estimated occupancy capacity of 294 persons and is therefore thought to meet with the Approved Document Part B. To allow free movement between the floors the occupancy has not been split 50/50% but rather allows for occupancy based on gym stations and functions assuming that a high percentage of the total occupancy could be on a single floor at one time.

Fire Alarm
 Fire Alarm designed and installed to BS 5839. Smoke & heat detection / emergency lighting by specialist. Please refer to M&E engineer's drawings / specifications.

Escape Lighting
 Emergency escape lighting designed and installed in accordance with BS 5266: Part 1. Please refer to M&E Engineer's drawings for final layout and specification.
 Escape Signage and emergency lighting is CDP under the M&E specification. Details of contractors proposals to be provided to Building Control Approved Inspector and Fire Officer within the Contractors Proposals Package, Clause 14.

Rev	Date	Description	SK/RL
C01	25.09.23	Drawing pack updated to capture amends in changing area	SK/RL
Rev	Date	Description	Drawn/Checked
PROJECT TITLE		DRAWING TITLE	
Derby West (Gym - 2184)		Fire Evacuation Plan	
Unit 10, Kingsway Retail Park, Derby, DA22 3FA		Ground and Mezzanine Floor Plans	
DATE	SCALE	NO	REV
14.08.23	1:100 @ A1	2184	003-FEP
DRAWING PURPOSE			
CONSTRUCTION			
Rev			
C01			

Pure Gym Ltd
 Town Centre House
 The Merrion Centre
 Leeds
 LS2 8LY
 e: architecture@puregym.com
 t: 0113 285 8787
 w: www.puregym.com